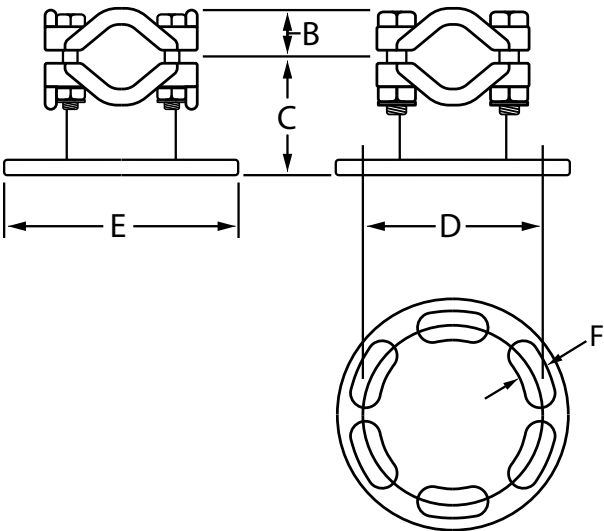
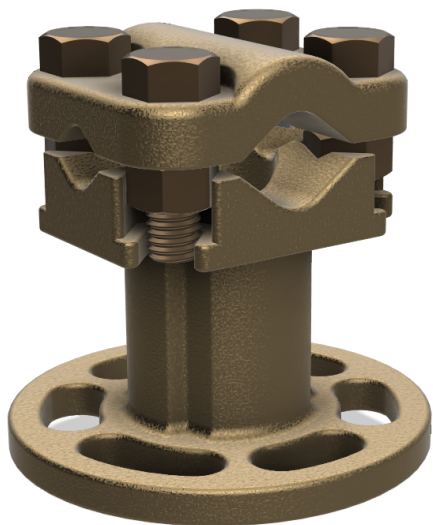


# Bus Supports

## D Bolting Bus Support



Type "D" is a line of rangetaking bus supports for cable. It is available for cable O.D.'s from 36" to 2 3/8". These units can also be used for rod and tubing bus.

Range, MCM Cable Size	Range, Inches Tubing Diam.	3" Bolt-Circle			5" Bolt-Circle		
		Catalog No.	Dim. In Inches		Catalog No.	Dim. In Inches	
			B	C		B	C
Up to 500	3/16 to 13/16	630113	15/16	1 9/16	630115	15/16	1 9/16
* 4/0 to 1250	1/2 to 1 5/16	630123	1 5/16	2 1/8	630125	1 5/16	2 1/8
750 and up	1 to 1 7/8	630133	1 3/8	2 5/8	630135	1 3/8	2 5/8
.....	1 3/4 to 2 3/8	630143	1 3/4	3 1/8	630145	1 3/4	3 1/8